

Alaska Department of Fish and Game

Habitat Section
Southeast Region



114-27-10545 Tributary 1

ADDITION

Water body name:

Survey date: 9/12/2022

Quad: Juneau A-5

Species & Lifestage:

Upper Reach Latitude: 58.172644 **Longitude:** -135.546356

Survey crew: DK, EF, RR

Lower Reach Latitude: 58.172712 **Longitude:** -135.544957

Findings: We surveyed this uncataloged stream using baited minnow traps and GPS. We captured juvenile coho salmon, Dolly Varden, and cutthroat trout. The tributary stream has intermittent subterranean flow where it crosses under a log-stringer bridge and flows through a beaver dam near its confluence with a cataloged stream (Table 1; Figures 1–3).

Recommendations: Add this uncataloged stream to the anadromous waters catalog for rearing coho salmon (Figure 4).

Nomination: Pending

Table 1.—114-27-10545 tributary 1 survey data.

Waypoint	Latitude	Longitude	Notes	Stream Width ft	Stream Substrate	Habitat Features	Gradient %	Sample Effort	Sample Results
1730	58.172504	-135.545258	Log-stringer bridge over creek which is dammed by beavers just downstream. Water is up to bridge bottom. Young-of-year coho in beaver pond.		Fine Organic		1-2	VI	6 CO
1732	58.172653	-135.546272	Log-stringer bridge over creek. Stream seeps into the ground under the bridge, small relic channel below with little flow but mostly overgrown. About 25' downstream, the channel emerges and continues downstream.	4-6	Small Gravel		1-2	MT	8 CO 4 DV 3 CT
1737	58.172727	-135.545584	Stream channel goes subsurface for 30-40'.						
1738	58.172710	-135.545301	Beaver dam about 2' tall, fish are able to pass through side channel and in main outlet.						
1739	58.17276	-135.54514	Stream enters along old beaver dam.	4-6	Fine Organic		0-1	Not Fished	
1740	58.17264	-135.54638	Trap set above bridge.	4-6	Small Gravel		2-4	MT	8 CO 3 CT



Figure 1.—Juvenile coho salmon and cutthroat trout captured at waypoint 1740.



Figure 2.—Channel at waypoint 1740.



Figure 3.—Beaver dam at waypoint 1738.

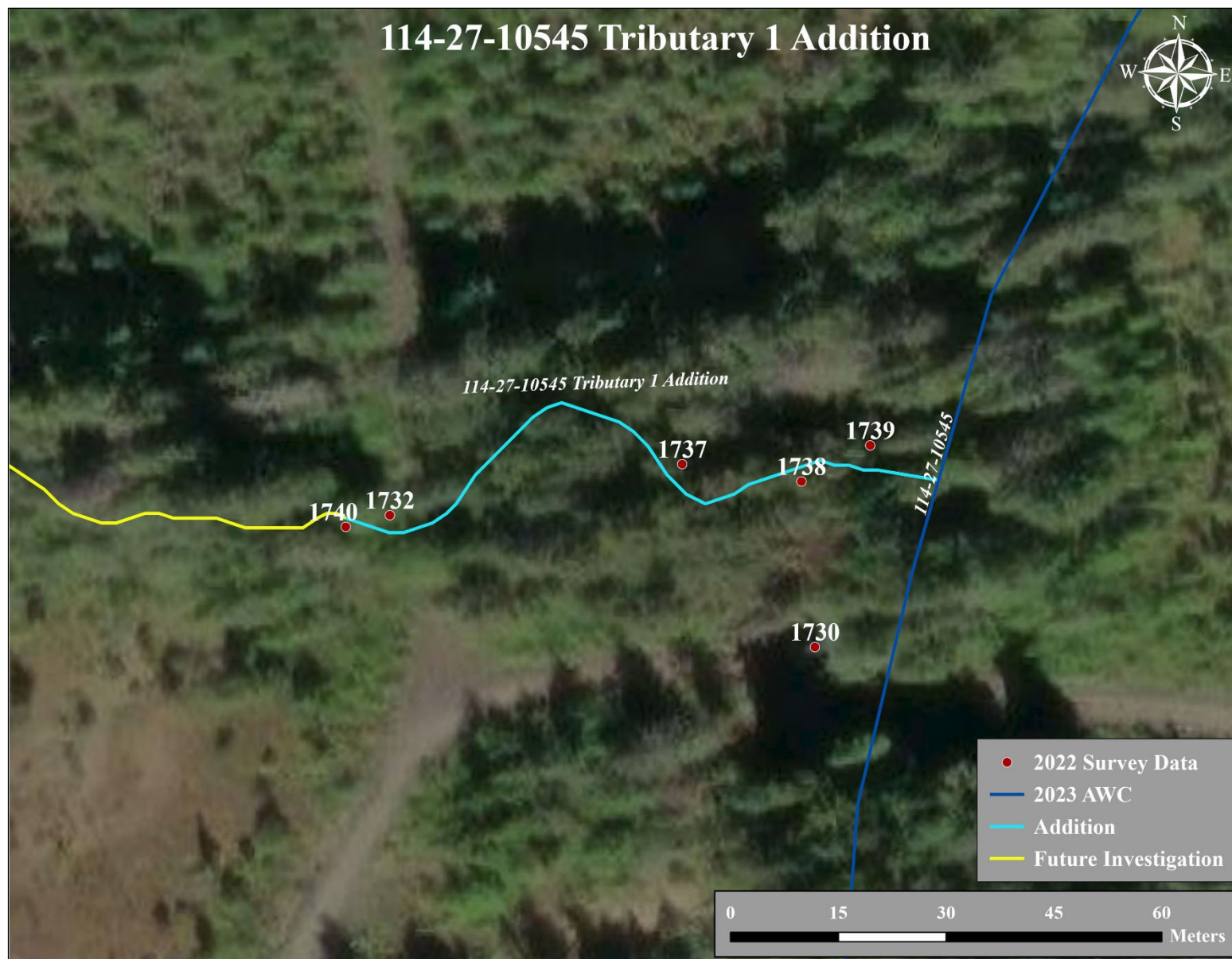


Figure 4.—114-27-10545 tributary 1 addition map.